

# **PRE-MEETING AGENDA**

---

**Casper City Council  
City Hall, Council Meeting Room  
Tuesday, April 5, 2022, 5:30 p.m.**



*\*Please silence cell phones during the City Council meeting\**

	<b>Presentation</b>	<b>Beginning Time</b>	<b>Allotted</b>
1.	Indoor Sports Complex	5:30	10 min
2.	OYD Parking Lot Food Truck Parking	5:40	10 min
3.	Agenda Review	5:50	5 min
	Approximate Ending Time		5:55

**We are CASPER**

**Communication    Accountability    Stewardship    Professionalism    Efficiency    Responsiveness**



PROJECT NUMBER

21-007

DATE

01-17-22

DRAWN BY

K LARSEN

DISK ID.

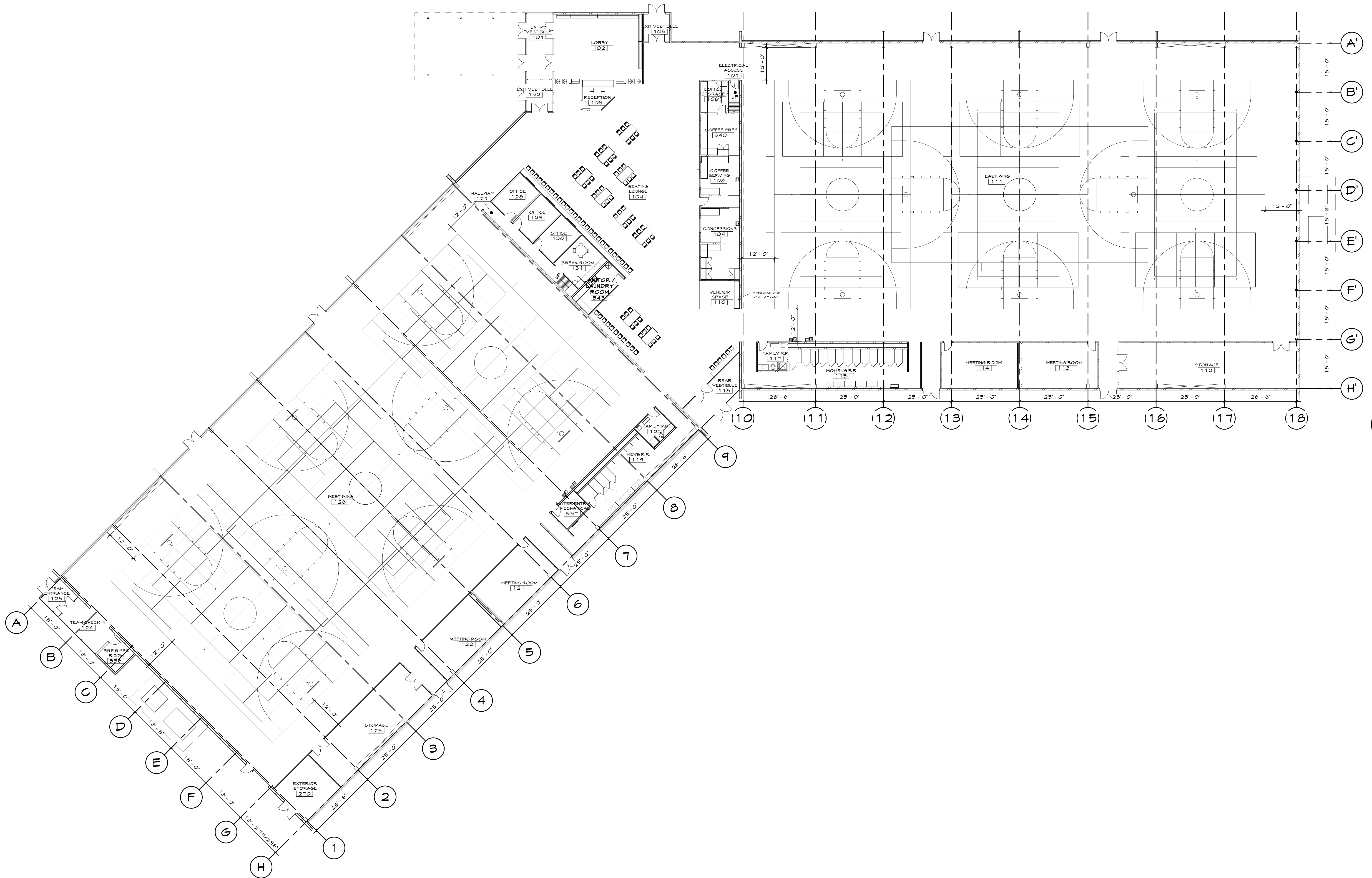
N/A

SHEET TITLE

FIRST FLOOR PLAN

SHEET NUMBER

A1



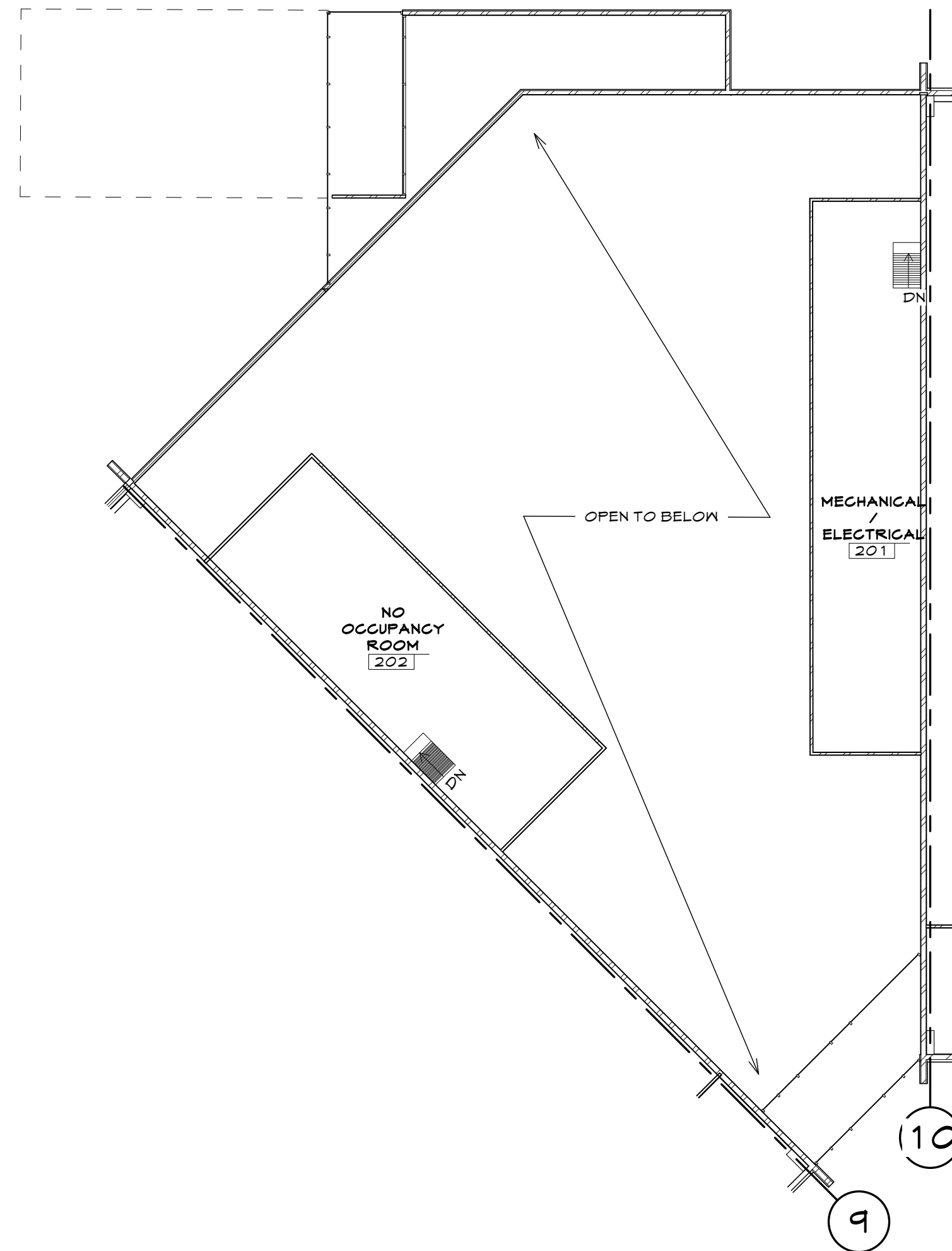
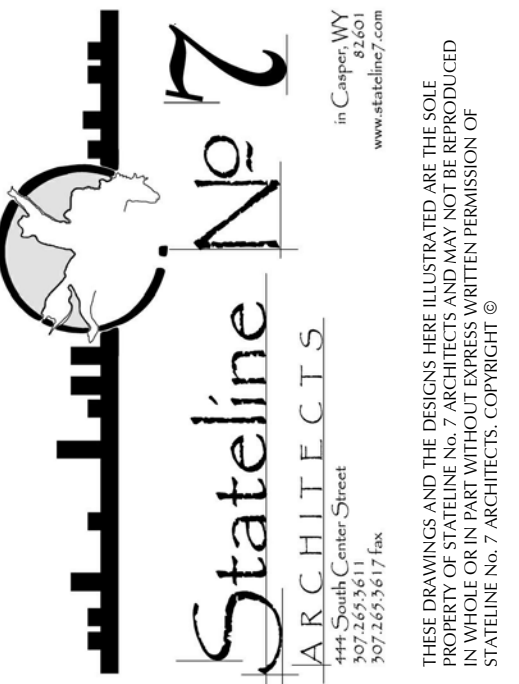
**1** FIRST FLOOR PLAN  
SCALE: 1/16" = 1'-0"

± 63,302 G.S.F.

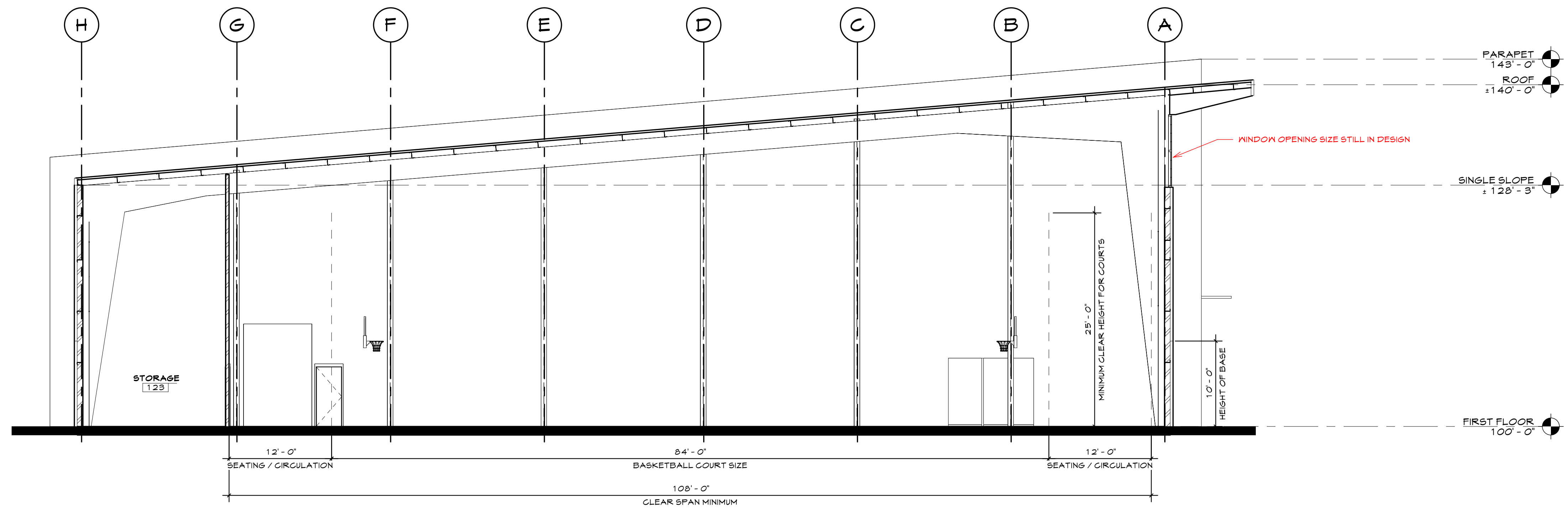
IN PROGRESS  
NOT FOR  
CONSTRUCTION

SPORTS COMPLEX

CASPER, WYOMING 82601



① MEZZANINE PLAN  
SCALE: 1/16" = 1'-0"



② SINGLE SLOPE SECTION  
SCALE: 1/8" = 1'-0"

PROJECT NUMBER

21-007

DATE

01-17-22

DRAWN BY

K LARSEN

DISK ID.

N/A

SHEET TITLE

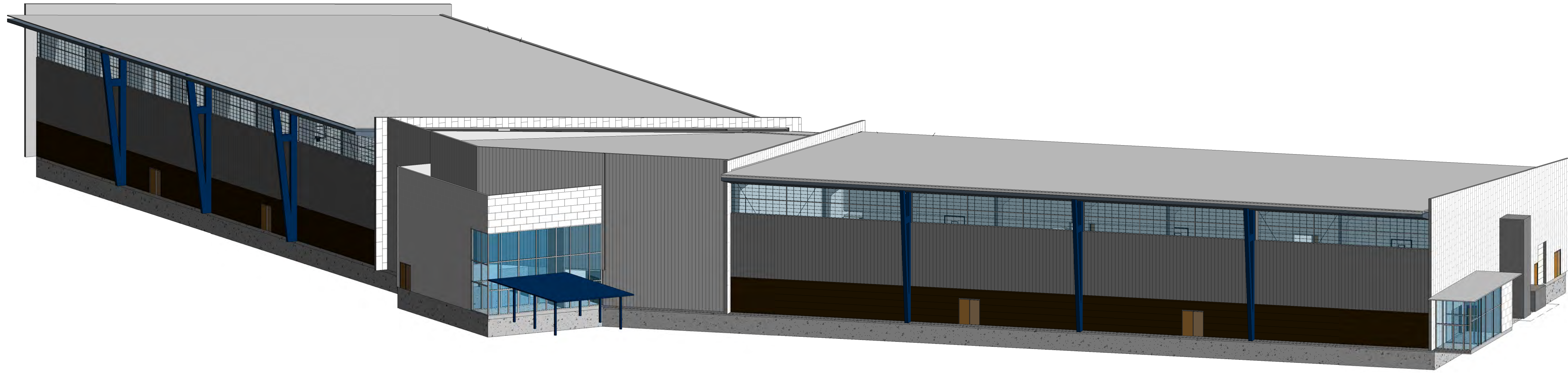
MEZZANINE  
FLOOR PLAN AND  
BUILDING  
SECTION

SHEET NUMBER

A2



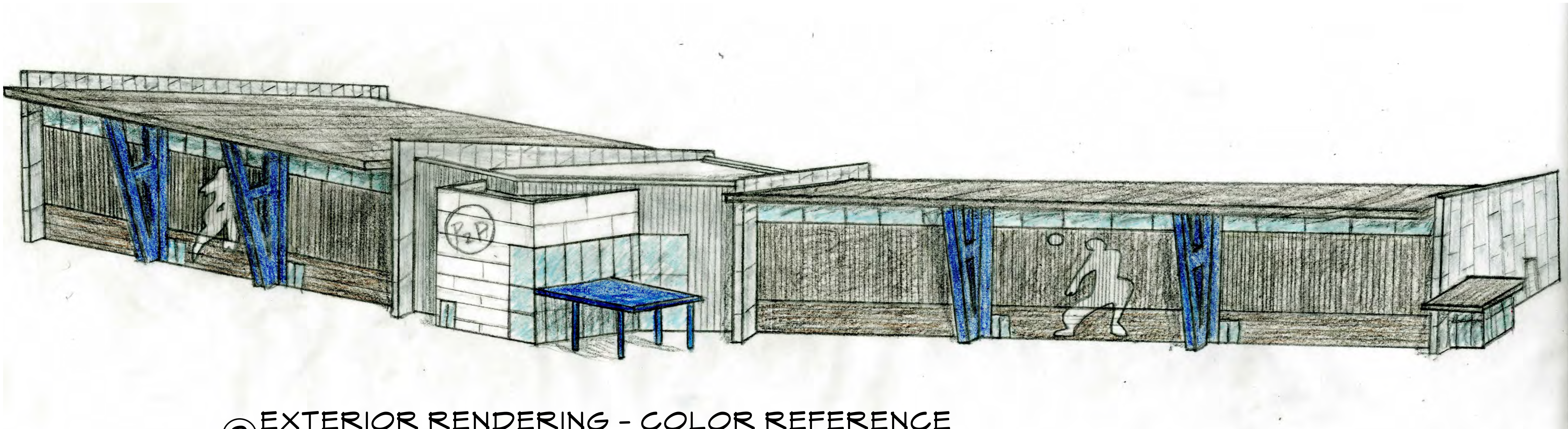
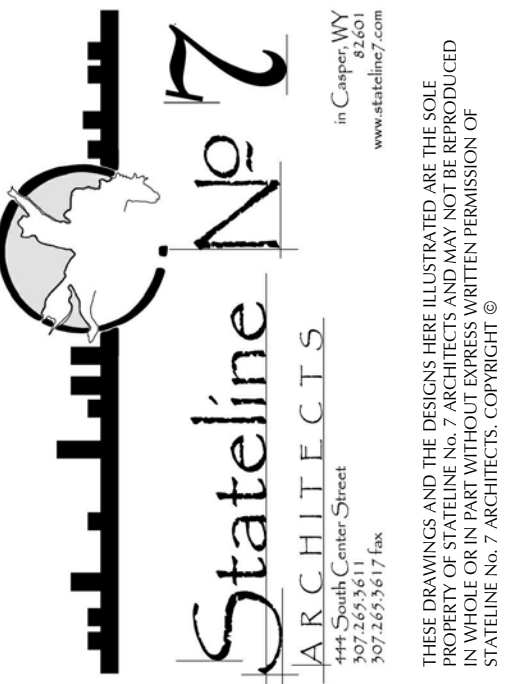
IN PROGRESS  
NOT FOR  
CONSTRUCTION



① FRONT ELEVATION 3D VIEW  
SCALE:

SPORTS COMPLEX

CASPER, WYOMING 82601



② EXTERIOR RENDERING - COLOR REFERENCE  
NOT TO SCALE

PROJECT NUMBER

21-007

DATE

01-17-22

DRAWN BY

K LARSEN

DISK ID.

N/A

SHEET TITLE

EXTERIOR 3D VIEW

SHEET NUMBER

A3





## Facility Program

### Indoor Athletic Facility

Space	Indoor Programming Product/Service	Count	Dimensions		Approx. SF each	Total SF	% of Footprint
			L (')	W (')			
Court Pod 1	Basketball Courts	3	-	-	-	22,700	34.6%
	Volleyball Courts	6	-	-	Over Basketball Courts		0.0%
	<b>Total Court Pod 1 Sq. Ft.</b>						<b>22,700</b>
Court Pod 2	Basketball Courts	3	-	-	-	22,623	34.5%
	Volleyball Courts	6	-	-	Over Basketball Courts		0.0%
	<b>Total Court Pod 2 Sq. Ft.</b>						<b>22,623</b>
SP	Sports Performance Training Area	1	50	40	2,000	2,000	3.0%
	<b>Total Sports Performance Sq. Ft.</b>						<b>2,000</b>
Flex Space	Entry Areas	1	-	-	943	943	1.4%
	Kitchen/Concessions	1	-	-	1,178	1,178	1.8%
	Café Seating Area	1	-	-	7,281	7,281	11.1%
	Flex/Team Room Area	1	-	-	1,934	1,934	2.9%
	Ref Rooms/Break Room	1	-	-	620	620	0.9%
	Restroom Area	1	-	-	1,882	1,882	2.9%
	Storage Area	1	-	-	2,192	2,192	3.3%
	Leased Space - Medical	0	-	-	2,000	0	0.0%
<b>Total Flex Space Sq. Ft.</b>						<b>16,029</b>	<b>24.4%</b>
Required SF for Products and Services						40,729	62.1%
Lobby, Mechanical, Electrical, Storage, Common Area,						24,869	37.9%
<b>Total Estimated Indoor Athletic Facility SF</b>						<b>65,598</b>	<b>100%</b>
<b>Estimated Building Footprint</b>						<b>59,038</b>	
<b>Total Building Acreage</b>						<b>1.4</b>	

### Site Development

Parking Spaces Total	Quantity	Dimensions		Approx. SF each	Total SF	% of Total	
		L (')	W (')				
Parking Spaces Total	Parking Spaces Total (10'x18') (20' x 20' inc. aisles)	262	20	20	400	104,957	71.9%
	Setbacks, Green Space, Trails, etc.		25% Indoor SF, 50% Outdoor			40,999	28.1%
<b>Total Estimated Site Development SF</b>					<b>145,956</b>	<b>100%</b>	
<b>Total Site Development Acreage</b>					<b>3.4</b>		
<b>Total Complex Acreage</b>					<b>4.7</b>		

Confidential



## Economic Impact

### Number of Events Per Year

	Year 1	Year 2	Year 3	Year 4	Year 5
Basketball Tournaments	3	3	5	5	5
Volleyball Tournaments	6	7	9	10	10
Other Tournaments/Events	6	6	6	6	6
<b>Total Events Per Year</b>	<b>15</b>	<b>16</b>	<b>20</b>	<b>21</b>	<b>21</b>

### Per Person Spending By Category

	Amount	% of Total
Lodging/Accommodations	\$32.00	26.7%
Dining/Groceries	\$44.25	36.9%
Transportation	\$7.52	6.3%
Entertainment/Attractions	\$3.54	2.9%
Retail	\$20.80	17.3%
Miscellaneous	\$11.95	10.0%
<b>Total</b>	<b>\$120.06</b>	<b>100%</b>

### Economic Impact Drivers

	Year 1	Year 2	Year 3	Year 4	Year 5
Non-Local Days in Market	19,944	20,169	23,139	23,364	24,084
Room Nights	5,957	6,017	6,884	6,944	7,157

### Economic Impact

	Year 1	Year 2	Year 3	Year 4	Year 5
Total Direct Spending	\$2,394,427	\$2,421,440	\$2,778,010	\$2,805,023	\$2,891,465
Total Indirect Spending	\$0	\$0	\$0	\$0	\$0
<b>Total Economic Impact</b>	<b>\$2,394,427</b>	<b>\$2,421,440</b>	<b>\$2,778,010</b>	<b>\$2,805,023</b>	<b>\$2,891,465</b>

Confidential

Confidential



## Economic Impact - 20-Year Outlook

### Economic Impact Drivers: Years 1-10

	Year 1	Year 2	Year 3	Year 4	Year 5	Year 6	Year 7	Year 8	Year 9	Year 10
Non-Local Days in Market	19,944	20,169	23,139	23,364	24,084	24,325	24,568	24,814	25,062	25,313
Room Nights	5,957	6,017	6,884	6,944	7,157	7,229	7,301	7,374	7,448	7,522

### Economic Impact: Years 1-10

	Year 1	Year 2	Year 3	Year 4	Year 5	Year 6	Year 7	Year 8	Year 9	Year 10
Per Person Spend by Category	\$120.06	\$120.06	\$120.06	\$120.06	\$120.06	\$121.86	\$123.69	\$125.54	\$127.42	\$129.34
<b>Total Economic Impact</b>	<b>\$2,394,427</b>	<b>\$2,421,440</b>	<b>\$2,778,010</b>	<b>\$2,805,023</b>	<b>\$2,891,465</b>	<b>\$2,964,185</b>	<b>\$3,038,734</b>	<b>\$3,115,159</b>	<b>\$3,193,505</b>	<b>\$3,273,821</b>

### Economic Impact Drivers: Years 11-20

	Year 11	Year 12	Year 13	Year 14	Year 15	Year 16	Year 17	Year 18	Year 19	Year 20
Non-Local Days in Market	25,566	25,821	26,080	26,340	26,604	26,870	27,138	27,410	27,684	27,961
Room Nights	7,598	7,674	7,750	7,828	7,906	7,985	8,065	8,146	8,227	8,309

### Economic Impact: Years 11-20

	Year 11	Year 12	Year 13	Year 14	Year 15	Year 16	Year 17	Year 18	Year 19	Year 20
Per Person Spend by Category	\$131.28	\$133.25	\$135.24	\$137.27	\$139.33	\$141.42	\$143.54	\$145.70	\$147.88	\$150.10
<b>Total Economic Impact</b>	<b>\$3,356,158</b>	<b>\$3,440,565</b>	<b>\$3,527,096</b>	<b>\$3,615,802</b>	<b>\$3,706,740</b>	<b>\$3,799,964</b>	<b>\$3,895,533</b>	<b>\$3,993,506</b>	<b>\$4,093,942</b>	<b>\$4,196,905</b>



# Celebrating 10 years of the Event Impact Calculator

POWERED BY:



## Impact Results

1 of 2 ?
Find | Next

### Event Impact Summary

Destination: Visit Casper

Event Parameters		Key Results	
Event Name:	2022 AAU Grand Prix Volleyball	Business Sales (Direct):	\$1,438,467
Organization:	Garden Creek Volleyball Club	Business Sales (Total):	\$2,229,311
Event Type:	Adult Amateur	Jobs Supported (Direct):	757
Start Date:	4/8/2022	Jobs Supported (Total):	833
End Date:	4/10/2022	Local Taxes (Total):	\$29,925
Overnight Attendees:	2400	Net Direct Tax ROI:	\$26,986
Day Attendees:	3000	Estimated Room Demand:	3,290

#### Direct Business Sales

Source	Amount
Attendees	\$1,438,467
Organizer	\$114,398
Media	\$281

Sector	Amount
Retail	\$421,464
Food/Bev	\$399,521
Lodging	\$312,580
Recreation	\$131,568
Trans.	\$58,655
Space Rental	\$22,717
Business Services	\$30,901

Industry	Attendees	Organizer	Media/Sponsors	Total
Lodging	\$312,580	\$0	\$0	\$312,580
Transportation	\$58,655	\$4,553	\$179	\$63,388
Food & Beverage	\$399,521	\$56,328	\$0	\$455,849
Retail	\$421,464	\$0	\$0	\$421,464
Recreation	\$131,568	\$0	\$0	\$131,568
Space Rental	\$0	\$22,717	\$0	\$22,717
Business Services	\$0	\$30,800	\$101	\$30,901
<b>TOTAL</b>	<b>\$1,323,788</b>	<b>\$114,398</b>	<b>\$281</b>	<b>\$1,438,467</b>

Destinations International Event Impact Calculator
3/25/2022 5:17:54 PM

[Edit Inputs \(Inputs.aspx?ID=765902\)](#)





# Celebrating 10 years of the Event Impact Calculator

POWERED BY:



Impact Results

1 of 2 ?
Find | Next

### Event Impact Summary

Destination: Visit Casper

Event Parameters		Key Results	
Event Name:	2022 Wyoming Super Regional Volleyball	Business Sales (Direct):	\$1,414,322
Organization:	Garden Creek Volleyball Club	Business Sales (Total):	\$2,198,715
Event Type:	Youth Amateur	Jobs Supported (Direct):	775
Start Date:	5/20/2022	Jobs Supported (Total):	845
End Date:	5/22/2022	Local Taxes (Total):	\$29,577
Overnight Attendees:	2376	Net Direct Tax ROI:	\$26,662
Day Attendees:	3000	Estimated Room Demand:	3,266

#### Direct Business Sales

##### Sales by Source

##### Sales by Sector

Industry	Attendees	Organizer	Media/Sponsors	Total
Lodging	\$310,265	\$0	\$0	\$310,265
Transportation	\$159,185	\$2,198	\$178	\$161,561
Food & Beverage	\$465,209	\$55,945	\$0	\$521,154
Retail	\$269,119	\$0	\$0	\$269,119
Recreation	\$99,255	\$0	\$0	\$99,255
Space Rental	\$0	\$22,563	\$0	\$22,563
Business Services	\$0	\$30,305	\$101	\$30,406
<b>TOTAL</b>	<b>\$1,303,033</b>	<b>\$111,011</b>	<b>\$279</b>	<b>\$1,414,322</b>

Destinations International Event Impact Calculator
3/25/2022 5:17:11 PM

[Edit Inputs \(Inputs.aspx?ID=765856\)](#)